

HILTI

Mounting System Photovoltaic
MSP system



Photovoltaic framework.

Hilti. Outperform. Outlast.

Applications

- Mounting of framed photovoltaic modules on pitched roofs
- Fixing of framed photovoltaic modules

Advantages

- Simple mounting; just five components form the basis for the framework of the photovoltaic system
- Very user-friendly, thanks to pre-assembled connection parts
No further nuts or bolts are required
- Economical, innovative system components and pre-assembled connection parts increase the productivity when installing
- Quality, structurally coordinated components provide long-term security
- Corrosion resistant, superior materials, such as aluminum and stainless steel, prevent contact corrosion

Highlight

- Designed to match the most popular photovoltaic modules

**We bring the sun
to your roof.**
Efficiently, cost-effectively
and safely.

Secure and quick mounting of photovoltaic frameworks with only five coordinated components; increased productivity with the Hilti MSP system.



Cost-effective and secure: the roof hooks are designed to match the loads encountered.



Efficiency: secure and quick mounting of the MSP-AL 33 channel from above via prefabricated clamps on the roof hooks.



The channel connector makes possible the assembly of both modules and roof hooks.

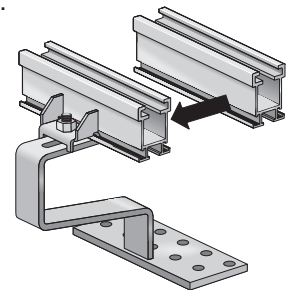


Quick and efficient.

With the framework MSP system for framed photovoltaic modules, you gain significant installation advantages. The pre-assembled construction parts facilitate quick and efficient work when constructing the framework of photovoltaic systems. With structurally coordinated components and the usage of superior construction parts, you achieve the maximum quality and long-term reliability.

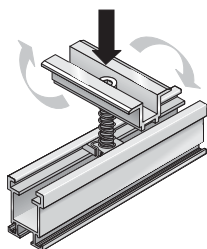
Channel mounting

Slide the channel under the pre-assembled clamp of the roof hook and screw it on from above.



Module fitting

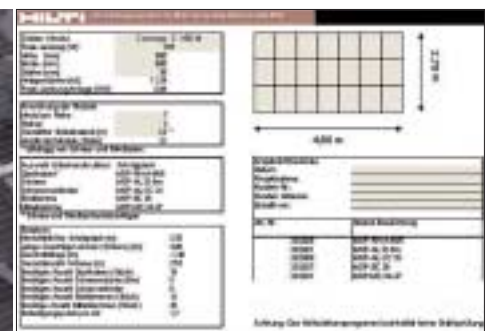
Install module clamp from above, turn 90° and screw down.



The pre-assembled module clamp can be installed and fitted from above to any desired point on the channel.



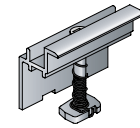
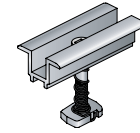
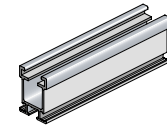
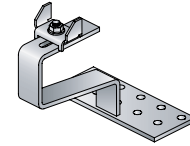
The integrated spring holds the module clamp at the required pre-set module thickness while fitting the module.



The parts list program determines the cost of the PV framework and the required construction parts.

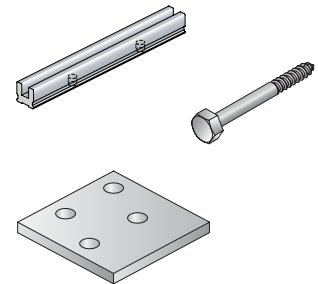
Roof hooks, mounting channel, clamps

Order designation	Article Number
Hilti MSP-RH 45/5 roof hooks	382922
Hilti MSP-RH 45/8 roof hooks	382923
Hilti iMSP-RH 55/5 roof hooks	382924
Hilti MSP-RH 55/8 roof hooks	382925
Hilti MSP-AL 33.6 m mounting channel	382921
Hilti MSP-MC 34-37 middle clamp	382931
Hilti MSP-MC 38-42 middle clamp	382932
Hilti MSP-MC 43-47 middle clamp	382933
Hilti MSP-MC 48-50 middle clamp	382934
Hilti MSP-EC 34 end clamp	382935
Hilti MSP-EC 35 end clamp	382936
Hilti MSP-EC 36 end clamp	382937
Hilti MSP-EC 38 end clamp	382938
Hilti MSP-EC 40 end clamp	382939
Hilti MSP-EC 42 end clamp	382940
Hilti MSP-EC 46 end clamp	382942
Hilti MSP-EC 48 end clamp	382943
Hilti MSP-EC 50 end clamp	382944



Accessories

Order designation	Article Number
Hilti MSP-AL-CC 33 channel connector	382959
Hilti hexagon wood screw 8x100	382961
Hilti hexagon wood screw 8x120	382962
Hilti MSP-SP 5 mm A2 distance plate	382960



Even more productivity:



High performance mains and cordless screwdriver with perfectly coordinated accessories



Cordless saws for various materials anywhere on the construction site



Powerful cordless hammer drills for unrestricted drilling on the roof



Laser gauge for exact and simple measuring of distances

Hilti. Outperform. Outlast.

Hilti Corporation | 9494 Schaan | Liechtenstein | P +423-234 2111 | F +423-234 2965 | www.hilti.com